



FEATURES

- Positive latching**
 Provides security in applications where shock and/or vibration may be severe
- Variety of contact sizes**
 Enables flexibility in wiring sizes and allows Customization
- Flat wiping contact system**
 Minimal contact resistance at high current, wiping action cleans contact surface during connection/disconnection

特征

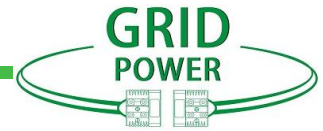
- 阳性锁扣外壳**
 阳性锁扣消除了线对线断开的机会
- 可提供多种接触件**
 提供多种规格接触件，可灵活的应用于各场合
- 平面接触技术**
 强电流下接触电阻最小，断开过程中产生的擦拭动作可清洁接触件表面

PRODUCT SPECIFICATIONS/产品规格

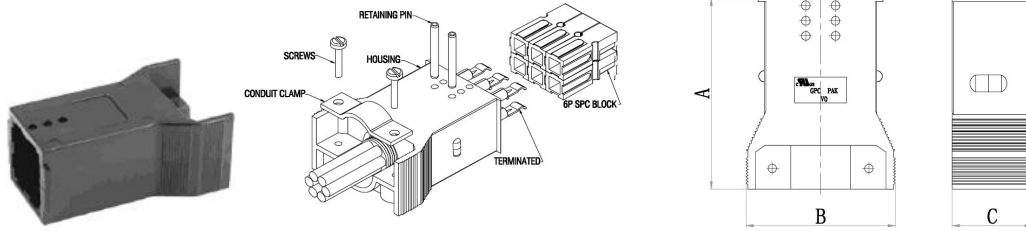
Current Rating (Amperes) 额定电流 (安培)	15	30	45
Voltage Ratings (Volts) 额定电压 (伏特)	600	600	600
Contact Barrel Wire Size (AWG) (mm ²) 适用线径 (AWG) (mm ²)	#16 to #20 1.3 to 0.5	#12 to #16 3.3 to 1.3	#16 to #20 1.3 to 0.5
Maximum Wire Insulation Diameter (inches)(mm) 最大绝缘导线直径(英寸) (毫米)	0.175 4.45	0.175 4.45	0.175 4.45
AVG Contact Resistance(micro-ohms) 接触电阻 (微欧)	875	600	525
Insulation Withstanding Test Voltage (Volts AC/DC) 绝缘耐电压 (交流/直流)	2200	2200	2200
Contact Retention Force (lbf) 端子保持力 (磅)	25	25	25
Life/寿命			
a. No load (Contact/Disconnect Cycles) 无负载 (插拔次数)	To 10,000 15A	To 10,000 30A	To 10,000 45A
b. Under Load (Hot Plug 250 cycles @ 120V) 负载状态 (120V 电压执插拔 250 次)			
Avg. Connection/Disconnect (lbf) 平均插拔力 (磅)	3	3	3
Operating Temperature Range °C °F	-20° to 105° -4° to 221°	-20° to 105° -4° to 221°	-20° to 105° -4° to 221°
Flammability Rating of Housing Material 材料防火等级 Plastic(塑胶壳) Polycarbonate Contact(端子) Copper Alloy Silver plating	UL94 V-0	UL94 V-0	UL94 V-0

GPC PAK

Grid Power Connector

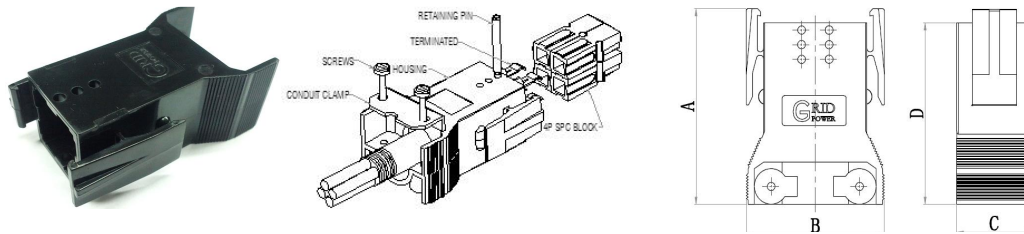


SHELL HOUSING ONLY ,PLUG WITHOUT LATCH/不带卡扣外壳



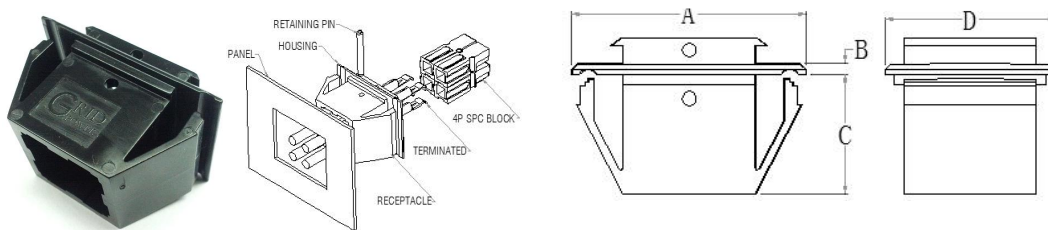
Part Number 料号	Number of Poles 极数	-A-		-B-		-C-	
		mm	In.	mm	In.	mm	In.
GPC PAK-G1461G1	2,3,4	49.28	1.94	31.15	1.23	21.53	0.85
GPC PAK-G1461G2	5,6	49.85	1.96	39.75	1.56	21.79	0.86
GPC PAK-G1461G3	7,8	49.56	1.95	48.04	1.89	21.42	0.84

SHELL HOUSING ONLY,PLUG WITH LATCH/带卡扣外壳



Part Number 料号	Number of Poles 极数	-A-		-B-		-C-		-D-	
		mm	In.	mm	In.	mm	In.	mm	In.
GPC PAK-G1460G1	2,3,4	53.11	2.09	31.15	1.23	21.53	0.85	49.28	1.94
GPC PAK-G1460G2	5,6	53.85	2.12	39.75	1.56	21.79	0.86	49.85	1.96
GPC PAK-G1460G3	7,8	53.41	2.10	48.04	1.89	21.42	0.84	49.56	1.95
GPC PAK-G1460G4	9,10	67.03	2.64	47	1.85	21.45	0.84	63.57	2.50

SHELL HOUSING ONLY,SNAP-IN RECEPTACLE/板端安装外壳



Part Number 料号	Poles 极数	-A-		-B-		-C-		-D-		Knock-out Size		Panel Thickness	
		mm	In.	mm	In.	mm	In.	mm	In.	mm	In.	mm	In.
GPC PAK-G1470G1	2,3,4	38.00	1.50	1.78	0.07	19.54	0.77	27.58	1.09	25.40X31.75	1.00X1.25	0.76to3.40	0.030to0.134
GPC PAK-G1470G2	5,6	48.18	1.90	1.78	0.07	19.55	0.77	28.24	1.11	25.40X41.75	1.00X1.62	0.76to3.40	0.030to0.134
GPC PAK-G1470G3	7,8	54.75	2.16	1.78	0.07	19.78	0.78	27.92	1.10	25.40X47.75	1.00X1.88	0.76to3.40	0.030to0.134
GPC PAK-G1470G4	9,10	61.78	2.43	1.78	0.07	19.83	0.78	28.14	1.11	25.40X55.58	1.00X2.19	0.76to3.40	0.030to0.134

Your Best High Power Connection



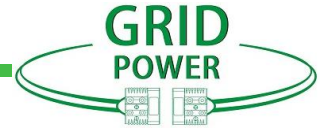
Shenzhen Grid Power Connectors Co., Ltd

Tel: +86 0755-23208099 23205933

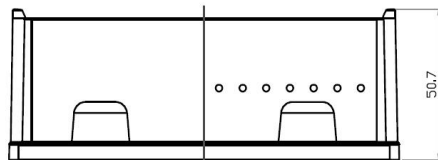
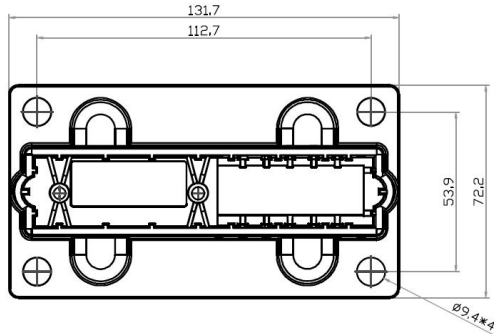
Address: The 2nd Floor, Building B&C, Plant 1, Senyang Technology Park, Guangming District, Shenzhen City, PRC
www.gridpower-conn.com www.grd-power.com

GPC PAK

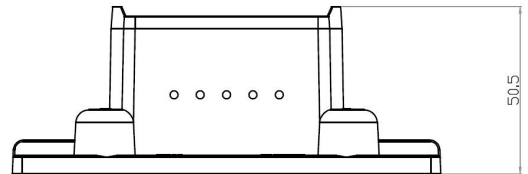
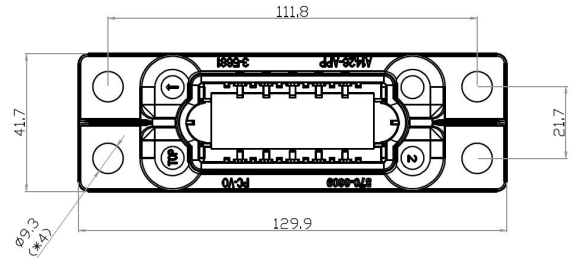
Grid Power Connector



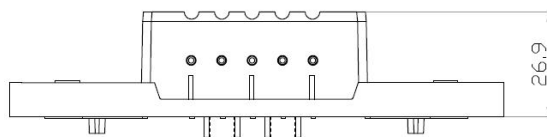
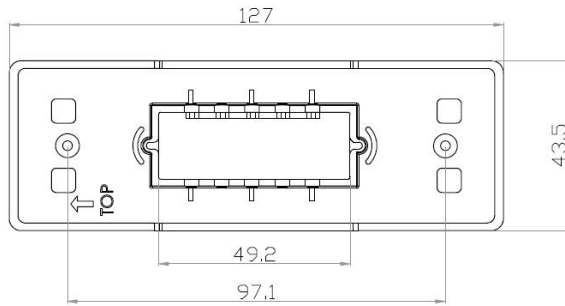
HOUSING/胶壳



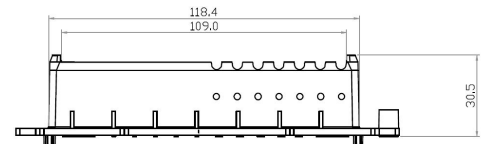
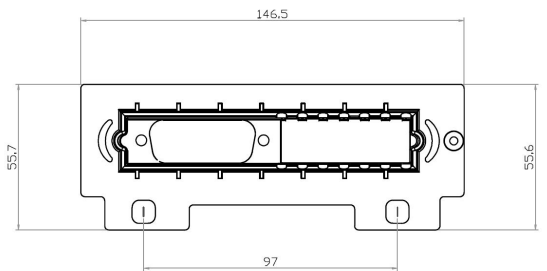
Part Number / 料号	Color / 颜色
G3-5680P1	Black 黑色



Part Number / 料号	Color / 颜色
G3-5681P1	Black 黑色



Part Number / 料号	Color / 颜色
G3-5682P1	Black 黑色



Part Number / 料号	Color / 颜色
G3-5683P1	Black 黑色

Your Best High Power Connection



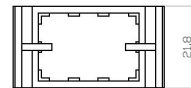
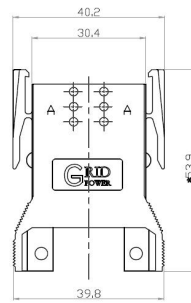
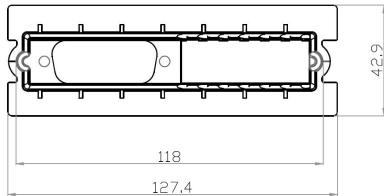
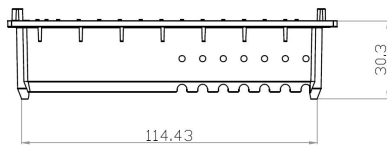
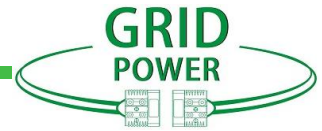
Shenzhen Grid Power Connectors Co., Ltd

Tel: +86 0755-23208099 23205933

Address: The 2nd Floor, Building B&C, Plant 1, Senyang Technology Park, Guangming District, Shenzhen City, PRC
www.gridpower-conn.com www.grd-power.com

GPC PAK

Grid Power Connector



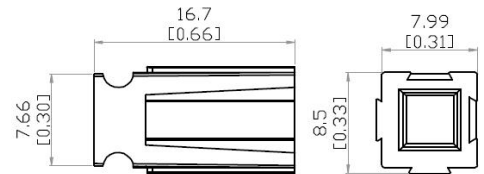
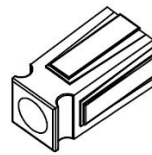
Part Number / 料号	Color / 颜色
G3-5682P2	Black 黑色

Part Number / 料号	Color / 颜色
G1460G2-FK	Black 黑色

SHORT SPACERS/短防呆柱



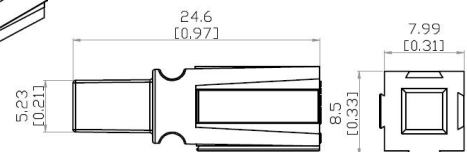
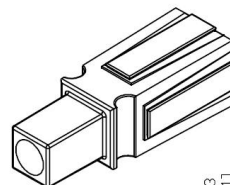
Part Num 料号	Color 颜色
G1399G6	Red 红色
G1399G13	Blue 蓝色
G1399G4	Green 绿色
G1399G16	Gray 灰色
G1399G14	White 白色



LONG SPACERS/长防呆柱



Part Number 料号	Color 颜色
G1399G2	Red 红色
G1399G10	Black 黑色
G1399G17	White 白色
G1399G19	Gray 灰色
G1399G3	Green 绿色



Your Best High Power Connection



E357218

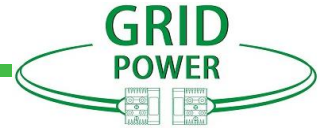
Shenzhen Grid Power Connectors Co., Ltd

Tel: +86 0755-23208099 23205933

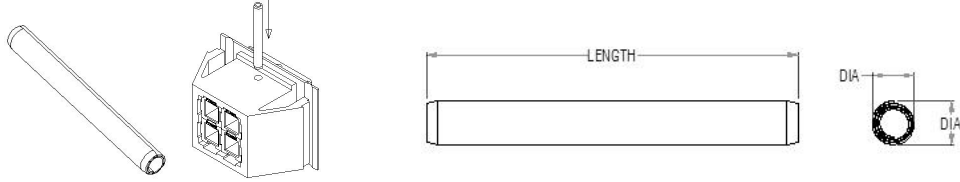
Address: The 2nd Floor, Building B&C, Plant 1, Senyang Technology Park, Guangming District, Shenzhen City, PRC
www.gridpower-conn.com www.grd-power.com

GPC PAK

Grid Power Connector



RETAINING PING/定位销



Part Number 料号	Description 描述	-DIA-		-LENGTH-	
		mm	In.	mm	In.
G110G9	2-HIGH BLOCK	2.36/2.51	0.093/0.099	21.6	0.85
G1509P12	2-HIGH-BLOCK	2.36/2.51	0.093/0.099	22.2	0.87
G1509P13	2-HIGH-BLOCK	2.41/2.49	0.095/0.098	31.8	1.25

Your Best High Power Connection



E357218

Shenzhen Grid Power Connectors Co. , Ltd

Tel: +86 0755-23208099 23205933

Address: The 2nd Floor, Building B&C, Plant 1 , Senyang
Technology Park, Guangming District, Shenzhen City, PRC

www.gridpower-conn.com www.grd-power.com